

# *aurora tools*<sup>®</sup>

## **8 - 12 Gallon Wet/Dry Vacuum JC525, JC526, JC527**

### **Owner's Manual**



**IMPORTANT: READ THIS OPERATOR'S MANUAL BEFORE USING!**

# TABLE OF CONTENTS

SECTION	PAGE
SAFETY INFORMATION .....	1
GROUNDING INSTRUCTIONS .....	1
INTRODUCTION .....	2
UNPACKING AND CHECKING CARTON CONTENTS .....	2
UNPACKING AND SET-UP SUMMARY .....	3
CASTER/ACCESSORY HOLDER ASSEMBLY .....	3
FILTERS ASSEMBLY .....	3
POWER HEAD ASSEMBLY .....	4
OPERATION .....	4
VACUUMING LIQUIDS .....	4
VACUUMING DRY MATERIALS .....	4
FILTER PERFORMANCE INDICATOR .....	4
EMPTY LIQUID WASTE FROM THE TANK .....	4, 5
BLOWER FUNCTION .....	5
ACCESSORIES .....	5
MAINTENANCE .....	6
FILTER .....	6
FILTER CLEANING .....	6
FILTER REMOVAL .....	6
CLEANING A WET FILTER .....	6
CLEANING A DRY FILTER .....	6
CLEANING AND DISINFECTING THE WET/DRY VACUUM .....	6
STORAGE .....	6
TROUBLESHOOTING .....	7
EXPLODED VIEW – MAIN UNIT .....	8
PART LIST - MAIN UNIT .....	9
WARRANTY .....	10

SPECIFICATION	
MODEL#	JC525, JC526, JC527
CONTAINER CAPACITY	8 GAL /10 GAL/12GAL
PEAK POWER	5.5/6.0 peak HP
VOLTAGE	120 V
FREQUENCY	60 Hz
CURRENT	7A
CERTIFICATE	CSA

# IMPORTANT SAFETY INSTRUCTIONS & GROUNDING INSTRUCTIONS

When using an electrical appliance, basic precautions should always be followed, including the following: **READ ALL INSTRUCTIONS BEFORE USING THIS APPLIANCE.**

## ATTENTION!

Read all safety rules carefully before attempting to operate. Retain for future reference.

## DANGER!

Never operate this unit when flammable materials or vapors are present because electrical devices produce arcs or sparks that can cause a fire or explosion. **NEVER OPERATE UNATTENDED!**

## WARNING!

**To reduce the risk of fire, electric shock, or injury:**

1. Do not leave the appliance unattended when plugged in. Unplug from outlet when not in use and before servicing. Connect to a properly grounded outlet only. See Grounding Instruction.
2. Do not expose to rain—store indoors.
3. Always disconnect the plug from the wall outlet before removing the tank cover
4. Do not allow to be used as a toy. Close attention is necessary when used by or near children.
5. Do not use with damaged cord or plug. If appliance is not working as it should, has been dropped, damaged, left outdoors or dropped into water, return to AURORA TOOLS.
6. Do Not: pull or carry by cord, use cord as a handle, close a door on cord or pull cord around sharp edges or corners. Do not run appliance over cord. Keep cord away from heated surfaces.
7. Do not unplug by pulling on cord. To unplug, grasp the plug; not the cord.
8. Do not handle plug or appliance with wet hands.
9. Do not put any object into openings. Do not use with any openings blocked; keep free of dust, lint, hair and anything that may reduce air flow.
10. Keep hair, loose clothing, fingers and all parts of body away from openings and moving parts.
11. Do not pick up anything that is burning or smoking, such as cigarettes, matches or hot ashes.
12. Do not use without dust bag and/or filters in place.
13. Turn off all controls before unplugging.
14. Use extra care when cleaning on stairs.
15. Do not use to pick up flammable or combustible liquids such as gasoline or use in areas where they may be present.
16. Do not use your cleaner as a sprayer of flammable liquids such as oil base paint, lacquers, etc.
17. Do not vacuum toxic, carcinogenic, combustible or

other hazardous materials such as asbestos, arsenic, barium, beryllium, lead, pesticides or other health endangering materials.

18. Do not pick up soot, cement, plaster or drywall dust without filter and dust bag in place. These are very fine particles that may affect the performance of the motor or be exhausted back into the air. Additional dust bags are available.
19. Do not leave the cord lying on the floor once you have finished the cleaning job. It can become a tripping hazard.
20. Use special care when emptying heavily loaded tanks.
21. To avoid spontaneous combustion, empty tank after each use.
22. The operation of a utility vac can result in foreign objects being blown into eyes, which can result in eye damage. Always wear safety goggles when operating vacuum.
23. **STAY ALERT.** Watch what you are doing and use common sense. Do not use vacuum cleaner when you are tired, distracted or under the influence of drugs, alcohol or medication causing diminished control. **NOTE:** Use only as described in this manual. Use only manufacturer's recommended attachments.

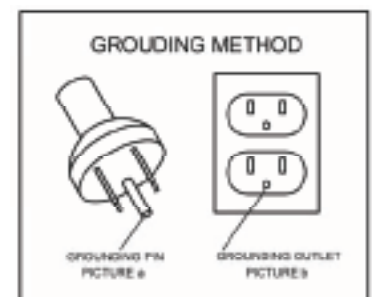
## SAVE THESE INSTRUCTIONS GROUNDING INSTRUCTIONS

This appliance must be grounded. If it should malfunction or breakdown, grounding provides a path of least resistance for electric current to reduce the risk of electric shock. This appliance is equipped with a cord having an equipment-grounding conductor and grounding plug. The plug must be inserted into an appropriate outlet that is properly installed and grounded in accordance with all local codes and ordinances.

**WARNING!** IMPROPER CONNECTION OF THE EQUIPMENT GROUNDING CONDUCTOR CAN RESULT IN A RISK OF ELECTRIC SHOCK. CHECK WITH A QUALIFIED ELECTRICIAN OR SERVICE PERSON IF YOU ARE IN DOUBT AS TO WHETHER THE OUTLET IS PROPERLY GROUNDED. DO NOT MODIFY THE PLUG PROVIDED WITH THE APPLIANCE. IF IT WILL NOT FIT IN THE OUTLET, HAVE A PROPER OUTLET INSTALLED BY A QUALIFIED ELECTRICIAN.

24. This appliance is for use on a nominal 120-volt circuit. The grounded plug that looks like the plug illustrated in picture (a). The grounded outlet that looks like the plug illustrated in picture (b). The customer only needs to plug the grounded plug into the grounded outlet which could accomplish the grounding.

25. Avoid using of extension cords. If cannot be avoided, the cord should be a minimum wire size of 18 AWG and no longer than 50 feet. Use only a 3-wire extension cord that has a 3-blade grounding plug, and a 3-slot receptacle that will accept the plug on the product.

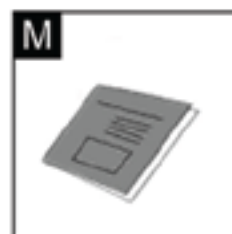
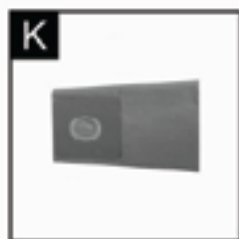


## INTRODUCTION

This Wet/Dry Vacuum is intended for household and workshop use. It may be used for vacuuming wet or dry media and may be used as a blower. Read this operator's manual to familiarize yourself with the product features and to understand the specific usage of your new vacuum.

## UNPACKING AND CHECKING CARTON CONTENTS

Remove contents of carton. Check each item against the Carton Contents list. Call 1-866-457-1161 or email us at [info@aurora-tools.com](mailto:info@aurora-tools.com) if any parts are damaged or missing.



Item	Part No	Description	Qty	Item	Part No.	Description	Qty
A	N/A	Vacuum Assembly	1	G	JC539	Caster Dolly	2
B	JC536	Flexible Hose	1	H	JC540	Caster	4
C	JC535	Utility Brush	1	J	JC531	Cartridge Filter	1
D	JC537	Floor Brush	1	K	JC532	Disposable Filter Bag	1
E	JC538	Crevice Nozzle	1	L	N/A	Accessories Hodler	1
F	JC534	Extension Wand	2	M	N/A	Users manual	1

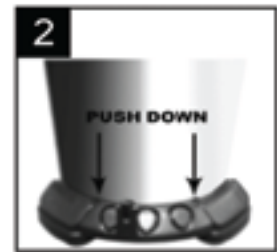
## UNPACKING AND SET-UP SUMMARY

1. Pull lid latches in an outward motion, remove power head and some accessories that may have been shipped in the tank.
2. Attach casters following the instructions in this manual.
3. Before replacing power head, refer to Filters Assembly and Power Head Assembly and Operation in this manual to ensure you have the proper filters installed for your cleaning operation.
4. Replace power head, and apply pressure with thumb to each latch until it snaps tightly in place. Make sure all lid latches are clamped securely.
5. Insert the flexible hose end into inlet of tank.
6. Attach the extension wands to the accessory end of the hose. Twist slightly to tighten the connection.
7. Attach one of the cleaning accessories (depending on your cleaning requirements) on the extension wands. Twist slightly to tighten the connection.
8. Plug the cord into the wall outlet. Your cleaner is ready for use.

## CASTER / ACCESSORY HOLDER ASSEMBLY

Not standard with all models

1. Invert dust tank, Insert caster (part H) into foot by placing stem of caster into the holes provided. Apply pressure and twisting motion until casters snap into place. (Picture 1) Caster will swivel easily when positioning is correct. Rotate dust tank assembly upright.
2. Place accessories holder (part L), with curved surface against tank, on rear caster dolly. (Picture 2)
3. Using a long screwdriver, install screws (part L) into matching holes on both side of accessory holder. Tighten screws until just snug. Do not over tighten as this may tend to deform the dollies.



## FILTERS ASSEMBLY

### CARTRIDGE FILTER ASSEMBLY

1. With the power head in an upside down position, slide the filter (part J) down over the lid cage. Push until the filter seals against the cover. (Picture 3)
2. Hold the power head with one hand, turn the handle on the filter retainer clockwise to tighten, locking the filter into place. (Picture 4)

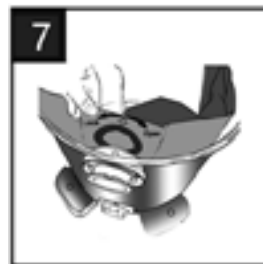
**IMPORTANT:** Do not over tighten as this may deform or crack the filter cage or filter.



3. To remove the filter for cleaning, again hold the tank cover and turn the filter retainer counter-clockwise to loosen and remove it. (Picture 5)
4. Slide the cartridge filter off the lid cage. (Picture 6)

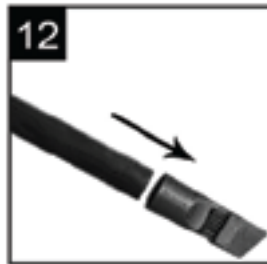
### DISPOSABLE FILTER BAG ASSEMBLY

5. Slide collar of disposable filter bag (part K) attached into deflector guide and turn it in counter clockwise to lock the bag in place.
6. To remove the disposable filter bag, turn the bag in clockwise and slide out of



## POWER HEAD ASSEMBLY

1. Install the power head assembly onto the tank assembly as shown. (Picture 8)
2. Rotate both latches up and press until you hear them snap over the flanges on the tank. (Picture 9)



## HOSE & EXTENSION TUBE ASSEMBLY

3. Insert the flexible hose (part B) end into inlet of tank. The hose should be snapped into place. (Picture 10) To remove the hose from vacuum, press the release button in the hose assembly and pull the hose out of the vacuum inlet.
4. Attach the extension wands (part F) to the accessories end of the wands. (Picture 11)
5. Attach one of the cleaning accessories (depending on your cleaning requirements) on the extension wands. (Picture 12 and 13)

## OPERATION

**THE FILTER MUST ALWAYS BE IN CORRECT POSITION TO REDUCE THE RISK OF LEAKS AND POSSIBLE DAMAGE TO THE VACUUM.**

### VACUUMING LIQUIDS

1. When picking up small amounts of liquid the cartridge filter (part J) may be left in place.
2. When picking up large amounts of liquid we recommend that the cartridge filter (part J) be removed. If the filter is not removed, it will become saturated and misting may appear in the exhaust.
3. When the liquid in the tank reaches a predetermined level, the float mechanism will rise automatically to cut off air-flow. When this happens the motor will develop a higher than normal pitch noise and the suction is drastically reduced. Please turn off the vacuum, unplug the power cord, and empty the tank.
4. After using the vacuum to pick up liquids, the cartridge filter (part J) must be dried to reduce the risk of possible mildew and damage to the filter.

### VACUUMING DRY MATERIALS

**ALWAYS DISCONNECT THE PLUG FROM THE WALL OUTLET BEFORE REMOVING THE POWER HEAD.**

1. To pick up wall dust and dry material, the disposable filter bag (part K) can be used for filtration.
2. To pick up wall dust and dry material, the cartridge filter (part J) can be used for filtration.

3. But disposable filter bag (part K) plus filter (part J) can be used for better filtration. When using your vacuum to pick up very fine dust, it will be necessary for you to empty the tank and clean the filter at more frequent intervals to maintain peak vacuum performance.

**NOTE:** If you use your vacuum to pick up dust when the filter is wet, the filter will clog quickly and be very difficult to clean.

4. If your filter (part J) is wet but you need to use filter to pick up dry material, you can quickly dry the filter by running the vacuum without hose attached for about 10 minutes. The clean air rushing through the vacuum will help dry the filter.

### FILTER PERFORMANCE INDICATOR

1. When the indicator is dark that indicate your filter is clean and ready to use. 2. When the indicator is light that shows your filter is dirty and needs to be cleaned or replaced or the vacuum clog, it need to be clean.

### EMPTY LIQUID WASTE FROM

**THE TANK TO REDUCE THE RISK OF INJURY FROM ACCIDENTAL STARTING, UNPLUG POWER CORD BEFORE EMPTYING THE TANK.**

1. The vacuum can be emptied of liquid waste by removing the tank drain cap. To empty, turn unit off and remove plug from the wall receptacle. Remove the drain cap and deposit the liquid waste contents

in a suitable drain. After the tank is empty, return the drain cap to its original position. (Picture 14)

**2.** Another option is to remove the power head assembly. Lay power head assembly aside on a clean area.

**3.** Dump the tank contents into the proper waste disposal container.

## **⚠ WARNING**

**TO REDUCE THE RISK OF BACK INJURY OR FALLS, DO NOT LIFT A VACUUM HEAVY WITH LIQUID OR DEBRIS. SCOOP OR DRAIN ENOUGH CONTENTS OUT TO MAKE THE VACUUM LIGHT ENOUGH TO LIFT COMFORTABLY.**



## **BLOWER FUNCTION**

## **⚠ WARNING**

ALWAYS WEAR SAFETY EYEWEAR COMPLYING WITH CSA Z94.3 BEFORE USING AS BLOWER.

TO REDUCE THE RISK OF INJURY TO BYSTANDERS, KEEP THEM CLEAR OF BLOWING DEBRIS.

## **⚠ ATTENTION**

WEAR A DUST MASK IF BLOWING CREATES DUST WHICH MIGHT BE INHALED.

## **⚠ ATTENTION**

TO REDUCE THE RISK OF HEARING DAMAGE WEAR EAR PROTECTORS WHEN USING THE VAC/BLOWER FOR EXTENDED HOURS OR WHEN USING IN A NOISY AREA.

- 1.** This vacuum features a blowing port. It can blow sawdust and other debris. Follow the steps below to use your vac as a blower.
- 2.** Locate blowing port of your vac (Picture 15).
- 3.** Insert the locking end of the hose (part B) into the blowing port of the vac. The hose should snap into place.
- 4.** To remove the hose from vac, press the release button in the hose assembly and pull the hose out of the vac inlet.
- 5.** (Optional) Attach extension wand to opposite end hose, then place the car nozzle on the wand.
- 6.** Turn vac on and you are ready to use your vac as a blower.

## **ACCESSORIES**

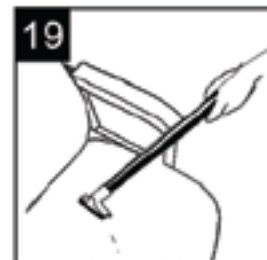
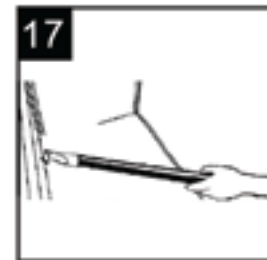
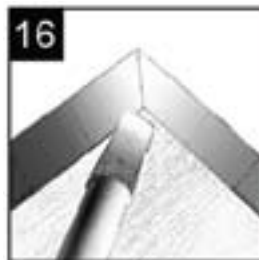
## **⚠ WARNING**

MAKE SURE ALL ASSEMBLY IS ACCORDING TO THIS MANUAL.

## **⚠ WARNING**

THE VACUUM IS EQUIPPED WITH THREE NOZZLES FOR DIFFERENT APPLICATIONS. EACH INDIVIDUAL NOZZLE CAN EITHER BE FITTED ONTO THE EXTENSION WAND OR DIRECTLY ONTO HANDLE OF FLEXIBLE HOSE.

- 1.** Crevice tool (part E) - It is suitable for sucking and cleaning corners and niches where other tools can't reach. It can also be used as a blowing tool. (Picture 16 & 17)
- 2.** Bristled floor brush (part D) - It is suitable for cleaning wide areas. Use on bare floors and carpets. (Picture 18)
- 3.** Wide angle tool (part C) - It is suitable for cleaning dust on carpets, sofas and mattresses. (Picture 19)



# MAINTENANCE

## FILTER



**TO REDUCE THE RISK OF INJURY FROM ACCIDENTAL STARTING, UNPLUG POWER CORD BEFORE CHANGING OR CLEANING FILTER.**

**NOTE:** The cartridge filter (part J) is made of high quality paper designed to stop very small particles of dust. The filter can be used for dry pick up or small amounts of liquid. Handle the filter carefully when removing to clean or installing it. Creases in the filter pleats may occur from installation but will not affect the performance of the filter.

**NOTE:** The disposable filter (part K) can only be used for dry pick up. Please do not use for wet pick up.

## FILTER CLEANING

**IMPORTANT:** After cleaning, check the filter for tears or small holes. Do not use a filter with holes or tears in it. Even a small hole can cause a lot of dust to come out of your vacuum. Replace it immediately.

## FILTER REMOVAL

To remove the filter for cleaning or replacement, unscrew the filter cover from the filter cage and lift off filter. **IMPORTANT:** To avoid damage to the motor and injury, always reinstall the filter (part J or K) before using the vacuum for dry or wet pick-up.

## CLEANING A WET FILTER

1. After filter (part J) is removed, run water through the filter from a hose or spigot. Take care that water pressure from the hose is not strong enough to damage the filter.
2. Refer to “filters assembly” section of this manual. Allow the filter to dry before reinstalling and storing the vacuum.

## CLEANING A DRY FILTER

1. For the best cleaning results due to accumulated dust, clean the filter in an open area. **CLEANING SHOULD** be done outdoors and not in the living quarters.
2. Refer to “filters assembly” section of this manual to remove the filter (part J) and disposable filter bag (part K).
3. After the disposable filter bag (part K) removal from vacuum, let the dry debris fall down to the garbage can from the dust bag.
4. After the filter (part J) removal from vacuum, remove the dry debris by gently tapping filter against the inside wall of your dust tank. The debris will loosen and fall.

5. For thorough cleaning of dry filter with fine dust (no debris), run water through it as described under “Cleaning a Wet Filter”

## CLEANING AND DISINFECTING THE WET/DRY VACUUM

To keep your Wet/Dry Vacuum looking its best, clean the outside with a cloth dampened with warm water and mild soap.

### TO CLEAN THE TANK:

1. Dump the debris out.
2. Wash drum thoroughly with warm water and mild soap.
3. Wipe out with dry cloth. Before prolonged storage or as needed (i.e.: waste water pick up) the tank should be disinfected.

### TO DISINFECT THE TANK:

1. Pour 1 gallon of water and 1 teaspoon chlorine bleach into the tank.
2. Let solution stand for 20 minutes, carefully swishing every few minutes, make sure to wet all inside surfaces of the tank.
3. Empty drum after 20 minutes. Rinse with water until bleach smell is gone. Allow tank to dry completely before sealing the power head on the tank.

## STORAGE

Before storing your vacuum, the dust tank should be emptied and cleaned. The cord should be wrapped around the unit. Accessories should be kept in the same area as the vacuum so they can be readily available. The vacuum should be stored indoors.



**TO ASSURE PRODUCT SAFETY AND RELIABILITY, REPAIRS AND ADJUSTMENTS SHOULD BE PERFORMED BY AUTHORIZED SERVICE CENTER, ALWAYS USING AURORA REPLACEMENT PARTS.**

1. The cord can be wrapped around the cord wrap provided on the tank cover.
2. The other accessories can be stored on the accessories holder. (Pictures 21 & 23)





## TROUBLE SHOOTING

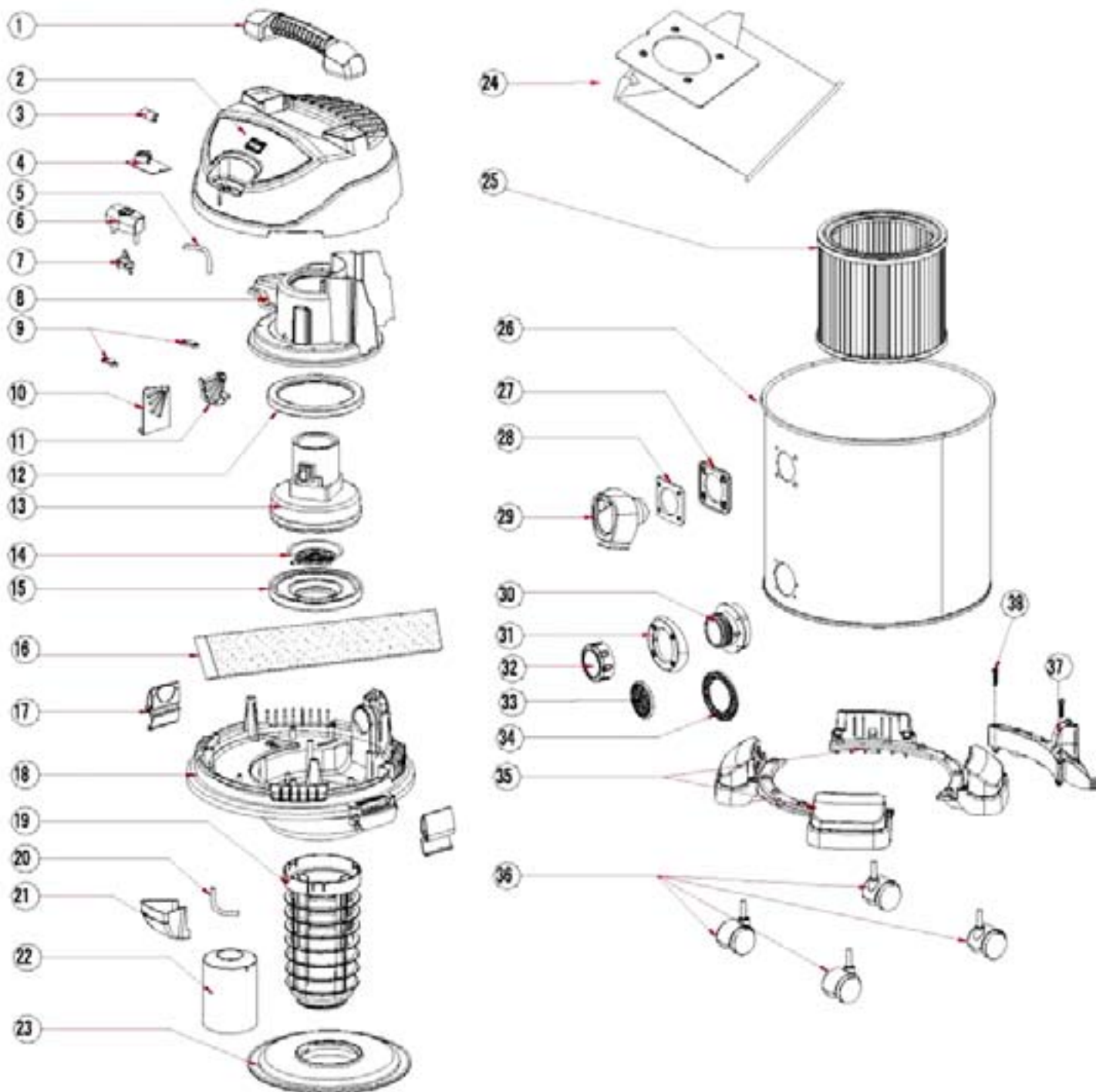


**TO REDUCE THE RISK OF INJURY FROM MOVING PARTS AND/OR ELECTRICAL SHOCK, TURN POWER SWITCH OFF AND DISCONNECT POLARIZED PLUG FROM ELECTRICAL OUTLET BEFORE PERFORMING TROUBLESHOOTING CHECKS.**

Minor problems often can be fixed without calling AURORA service line

PROBLEM	CAUSE	SOLUTION
Vacuum will not run	No electricity	Make sure electrical outlet has voltage. (A qualified electrician may need to be contacted).
Loss of suction wet pick-up	Full tank	Drain and clean tank (follow instructions on page 6)
	Clogged hose	Remove or replace filter (follow instructions on page 6)
	Clogged filter	Clean or replace filter (follow instructions on page 6)
Loss of suction dry pick-up	Full tank	Empty and clean tank (follow instructions on page 6)
	Clogged hose	Remove hose and clean debris
	Clogged filter	Clean or replace filter (follow instructions on page 6)

# EXPLODED VIEW-MAIN UNIT



## PARTS LIST - MAIN UNIT

ITEM	DESCRIPTION	QTY
1	Handle	1
2	Top cover assembly	1
3	Indicator cover	1
4	Power circuit board	1
5	Air pipe1	1
6	OFF/ON switch button	1
7	ON/OFF switch	1
8	Thermal baffle	1
9	Holder plate for switch	1
10	Air by-pass board	1
11	Air by-pass valve	1
12	Motor support ring	1
13	Motor	1
14	Inlet grill	1
15	Motor seal ring	1
16	Noise absorb sponge	1
17	Lid latch	2
18	Motor base	1
19	Float Holder	1

ITEM	DESCRIPTION	QTY
20	Air pipe2	1
21	Air pipe cover	1
22	Float	1
23	Cartridge filter cover	1
24	Disposable filter dust bag	1
25	Cartridge Filter	1
26	Drum	1
27	Inner fixation board	1
28	Outer fixation board	1
29	Inlet tube holder	1
30	Drain inner fixation board	1
31	Drain outer fixation board	1
32	Drain cap	1
33	Drain cap seal	1
34	Drain inner seal ring	1
35	Caster dolly	2
36	Caster	4
37	Accessories holder	1
38	Screw	2

# WARRANTY

The Warranty and return policy stated and described below pertain to all products carrying the Aurora Tools® trademark. This Warranty supersedes any and all manufacturer's warranties, written or implied. Our sole liability is limited to the repair or replacement of any product proven to be defective in material and/or workmanship and for which a Warranty claim is made during the applicable Warranty period. No claims for damages of any type will be allowed. All products are sold on this basis. Defective warranted products will be repaired or replaced at our sole discretion at no cost with a new or reconditioned product. This Warranty only applies when the product is used for the purpose for which it was originally designed, under normal operating conditions. This Warranty does not apply to products which have been abused, mis-used, modified or have been repaired by someone other than us. Discontinued warranted products will be replaced with products that are similar and available, or we will issue an appropriate credit. The specific warranty coverage for each product is as set out below. Aurora Tools® are only sold on a wholesale basis and accordingly, warranties only apply to purchasers for resale or for use in their business.

## ONE-YEAR LIMITED WARRANTY

This Warranty applies to **Aurora Tools® brand Air Tools, Precision Measuring Tools, Lubricating Equipment, Staple Guns, Glue Guns, Utility Knives, Tool Boxes, Multi-Tools, Bench Vises and Fans and Vacuums**. When presented to us within one (1) year from the invoice date of the original purchase, we will repair the defective product or will replace it, at our discretion.

## RETURN POLICY

Please return the COMPLETE tool, freight prepaid, to the Aurora Tools® Distributor where you purchased the product.

If you have any questions, please contact your authorized Aurora Tools® Distributor (proof of purchase is required).

This Warranty shall be governed by and interpreted in accordance with the laws of Quebec and the laws of Canada applicable therein.