

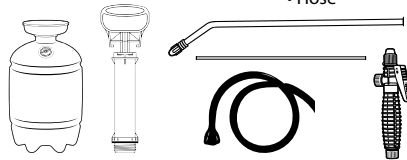
NJ165 Polyethylene Sprayer Instructions

FOR YOUR SAFETY

This sprayer operates with liquid under pressure. Failure to observe CAUTIONS and follow instructions for use and maintenance can cause tank, hose or other parts to become corroded, weakened, and/or burst. This can result in **SERIOUS INJURY** or **PROPERTY DAMAGE** from forcible ejection of parts or high-pressure discharge of spray material. **DO NOT USE ANY FLAMMABLES OR BOILING LIQUIDS IN THIS SPRAYER** as it is not designed nor intended for such use. Some spray materials can ignite or explode. Do not spray in an enclosed space, near an open flame such as found in a BBQ grill or water heater, near an electric motor or open switch, or any source of heat. **DO NOT SMOKE** while spraying. Use of flammables could result in **SERIOUS INJURY** or **PROPERTY DAMAGE** from unintended ignition or explosion. **DO NOT USE ANY CAUSTICS OR ACIDS IN THIS SPRAYER**, since these can damage or weaken the sprayer and its parts, resulting in **SERIOUS INJURY** or **PROPERTY DAMAGE**. Keep out of reach from children and pets. Always read and follow directions on the spray material container, including the need for protective clothing. **BEFORE USING YOUR SPRAYER**, thoroughly **INSPECT** both inside and outside of the sprayer and **DO NOT PRESSURIZE** sprayer if tank, hose or other parts appear to be damaged, discolored, brittle, excessively soft or loose. **DO NOT PRESSURIZE WITH ANY MECHANICAL DEVICE** such as an air compressor, since this can create dangerous pressure and bursting of parts and result in **SERIOUS INJURY**. Wear long-sleeved shirt, pants, gloves, goggles or similar protective clothing when spraying.

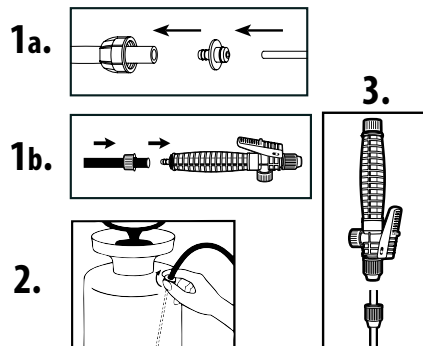
INSIDE THE BOX

- Sprayer Tank
- Pump
- Spray Wand
- Shut-off Valve
- Supply Tube
- Instructions
- Hose



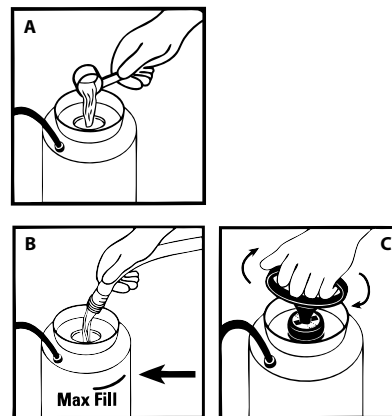
HOW TO ASSEMBLE

- Assemble hose.
 - Side to tank:** Slide large hose cap nut onto hose, threads face end of hose. Insert hose barb to end of hose. Insert supply tube into hose barb.
 - Side to shut-off valve:** Slide small shut-off valve cap nut onto hose, threads face end of hose. Insert barb end of shut-off valve onto hose. **IMPORTANT:** Be sure hose is all the way over the barb! Tighten shut-off valve cap nut to shut-off valve.
- Insert the supply tube into the tank and securely thread on the cap nut. **CAUTION:** Make sure the cap nut is threaded all the way down. If loose, it may come off with force or spray may escape resulting in **SERIOUS INJURY**.
- Attach spray wand to shut-off valve.
 - Insert spray wand fitting into shut-off valve.
 - Screw down wand retainer cap nut onto valve. Screw nut onto the shut-off valve. Note: This is not a compression fitting, but it is normal for nut to screw on tightly.



HOW TO FILL

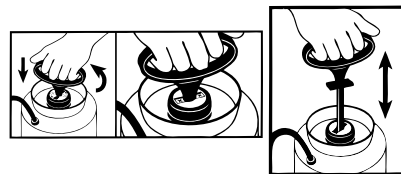
- Pour measured amount of spray material into the open tank. *Follow label directions on spray material container for amount to use.*
- Add water as directed. *Do not fill beyond the MAX FILL line.*
- Insert pump and turn clockwise to seal. Do not over tighten.



HOW TO PRESSURIZE

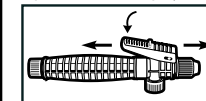
Unlock pump handle by pushing down and turning handle. Do not unscrew pump cap or remove pump. Using the handle, pump up and down. The more you pump, the more pressure you will build up inside the tank. When it becomes difficult to pump, your tank has reached maximum pressure. Do not stand so your head is over pump.

- Use low pressure (fewer strokes) for a coarse spray.
- Use high pressure (more strokes) for a fine mist or a long-reaching stream.



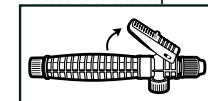
HOW TO SPRAY

Squeeze handle to spray

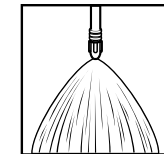


Push handle forward to lock.
Push handle back to unlock.

Release handle to stop



Note: Spray may stop if nozzle is tightened all the way down.



Tighten nozzle for fine mist
Loosen nozzle for coarse or long range

HOW TO RELEASE PRESSURE

Turn sprayer on its side and turn nozzle away from you. Squeeze lever or push button to "ON" and let all the air escape. Turn sprayer up-right and slowly unscrew pump from tank and remove it. Do not stand so your head is over pump. This sprayer is equipped with a pressure release valve on the tank, you may also twist the top portion open and hold it until all air has escaped. Twist valve closed to reseal. Then remove pump.



SERVICE AND MAINTENANCE

Clean and dry your sprayer after every use to greatly prolong its useful service life. Many spray materials will harden if left in the sprayer and plug up the nozzle, shut-off valve or supply tube. The soft parts, O-rings and gaskets, will ultimately wear out and need replacing, just like the oil filter on your car, for example. How often they need replacing depends on how much you spray, the spray materials you use and whether or not the sprayer is regularly cleaned after use.

If you leave your sprayer in the garage over Winter, particularly in northern areas, the soft parts may dry out and need servicing before you use your sprayer for the first time in the Spring.