

aurora tools[®]

**Model No. TLV495
1/4" AIR SCREWDRIVER**



Torque (Clutch) Adjustment.



- 1.** Open the clutch housing by turning clockwise.
(Part no.41)



- 2.** Remove the parts which connect to the cam spindle.
(Part no.32~40)



- 3.** Secure the parts in step 2 with a fixed screwdriver bit.



- 4.** Locate the hex nut which is under the spring.
(parts no.37).

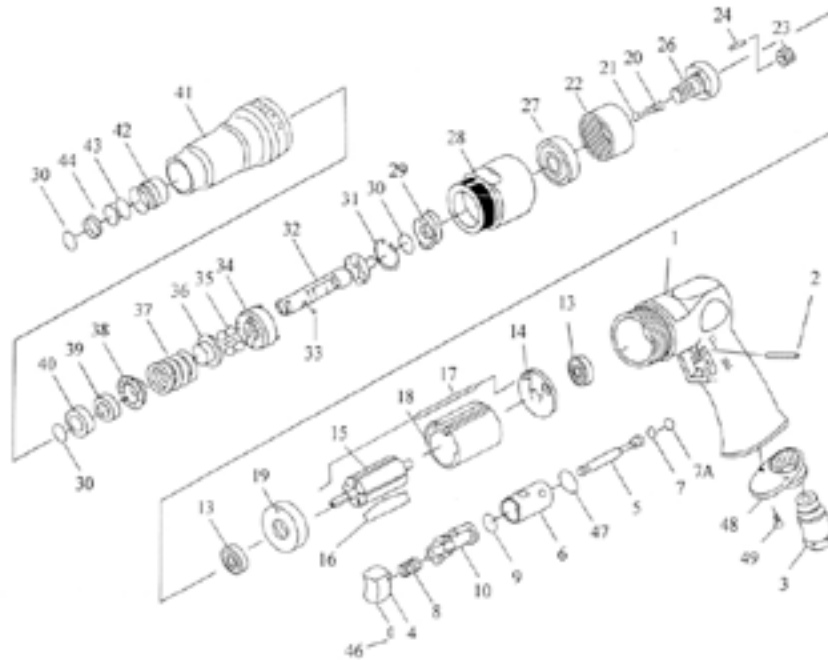


- 5.** Adjust the torque/clutch of the hex nut with a 17mm hex wrench.

Model No. TLV495

1/4" Adjustable Clutch Screwdriver

aurora tools[®]



Part No.	Description	Qty
1	Housing	1
2	Pin	1
3	Air Inlet	1
4	Trigger	1
5	Valve Stem	1
6	Reverse Pushing	1
7	O-Ring	1
7A	O-Ring (3.9 x 2.25 x 2)	1
8	Valve Spring	1
9	O-Ring	1
10	Reverse Lever	1
13	Ball Bearing (2)	2
14	End Plate (2)	1
15	Rotor	1
16	Rotor Blade (5)	5
17	Pin	1
18	Cylinder	1
19	Spacer	1
20	Spring	1
21	Spring Guide	1
22	Internal Gear	1
23	Planet Gear	3
24	Pin (4 x 13.8)	3

Part No.	Description	Qty
26	Work Spindle	1
27	Ball Bearing	1
28	Clamp Nut	1
29	Drive Dog	1
30	Retaining Ring (3)	3
31	Retaining Ring	1
32	Cam Spindle	1
33	Steel Ball	1
34	Clutch Carrier	1
35	Steel Ball (4)	4
36	Washer	1
37	Spring	1
38	Washer	1
39	Adjust Nut	1
40	Spacer	1
41	Clutch Housing	1
42	Ball Retainer	1
43	Spring	1
44	Washer	1
46	Set Screw	1
47	O-Ring	1
48	Exhaust Diffuser	1
49	Screw (2)	2